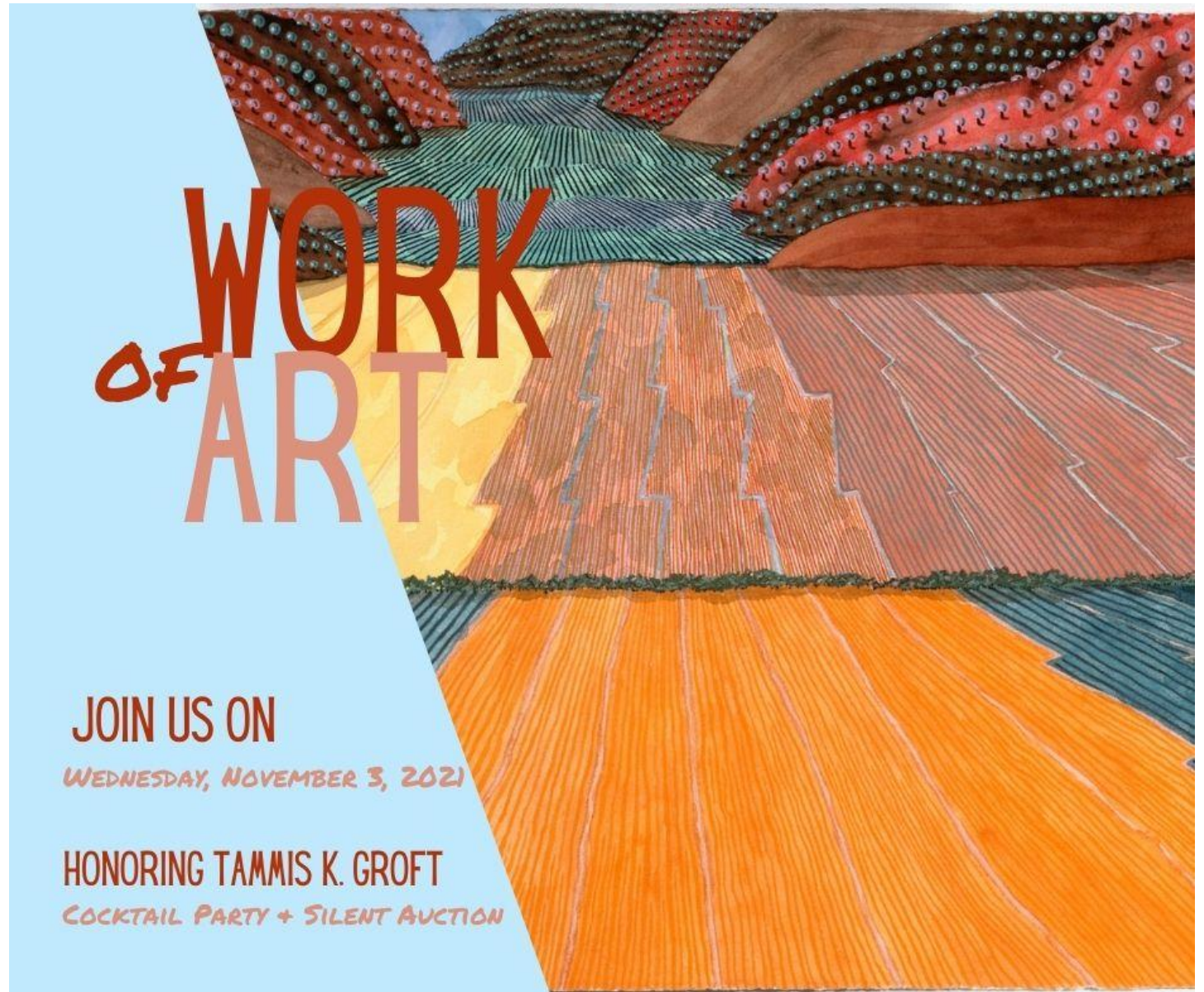




# Work of Art

---

2021 Silent Art Auction





Jane Bloodgood-Abrams

End of Day

Oil on panel, 11" x 13" (Framed); Opening Bid \$300/ Retail: \$800



David Brickman

Parking Lot Boogie Woogie | Albany 2021 ed. 1/5

Giclee color print of a digital color photograph, 31" x 24" (Framed);

Opening Bid \$450/ Retail: \$650



Paula Drysdale Frazell

Urban Birdhouses: Arbor Hill

Mixed media collage on wood, 12" x 36"; Opening Bid \$500/ Retail: \$800



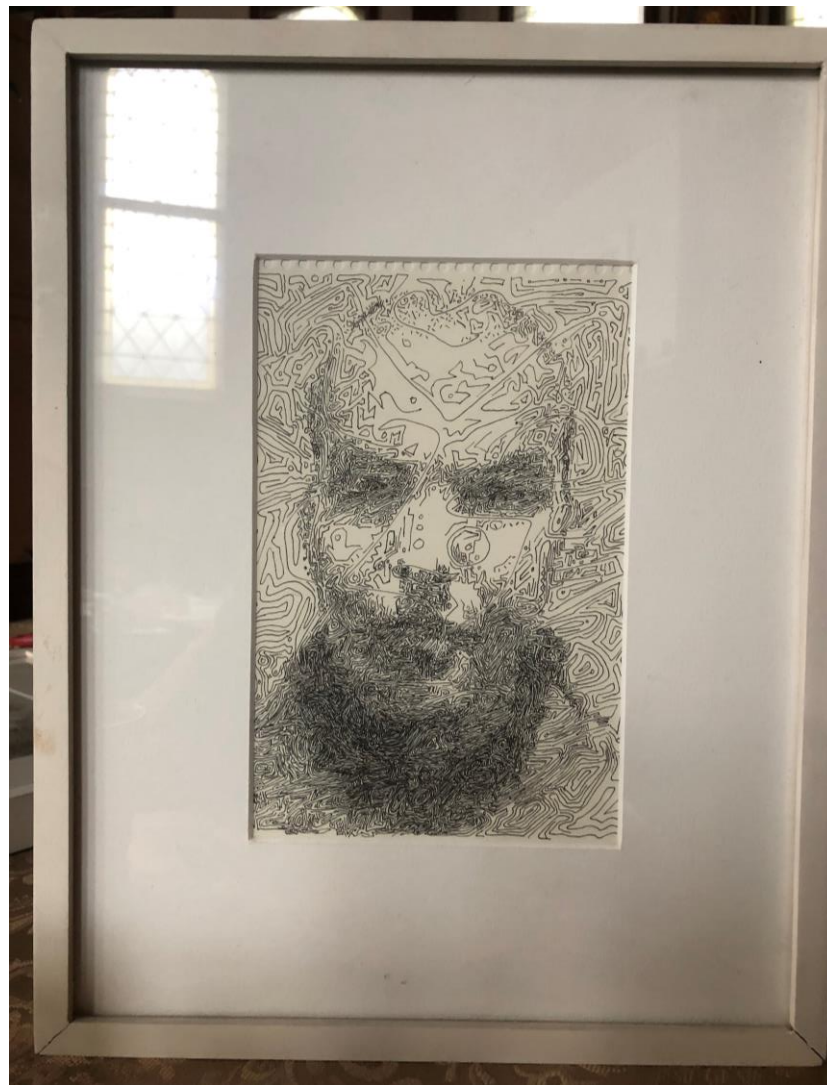
Connie Frisbee Houde  
Contrast, Mazar & Shaif, Afghanistan  
Archival digital print, 20" x 16" (Framed); Opening Bid \$150/ Retail: \$300



Mike Glier

Mirror with Two Post-its

Oil on canvas, Opening Bid \$200/ Retail: \$3,000



John Hampshire  
Richard

Ink on paper, 11" x 14" (Framed); Opening Bid \$150/ Retail: \$600



Ali Herrmann

Lavender Sunsets

Oil on canvas, 20.25" x 16.25" (Framed); Opening Bid \$250/ Retail: \$400





Tony Iadicicco

A Place Beyond

Oil and acrylic on canvas, 12" x 24"; Opening Bid \$250/ Retail: \$800



KK Kozik  
In the Park

Oil on linen, 42" x 30"; Opening Bid \$600/ Retail: \$8,000



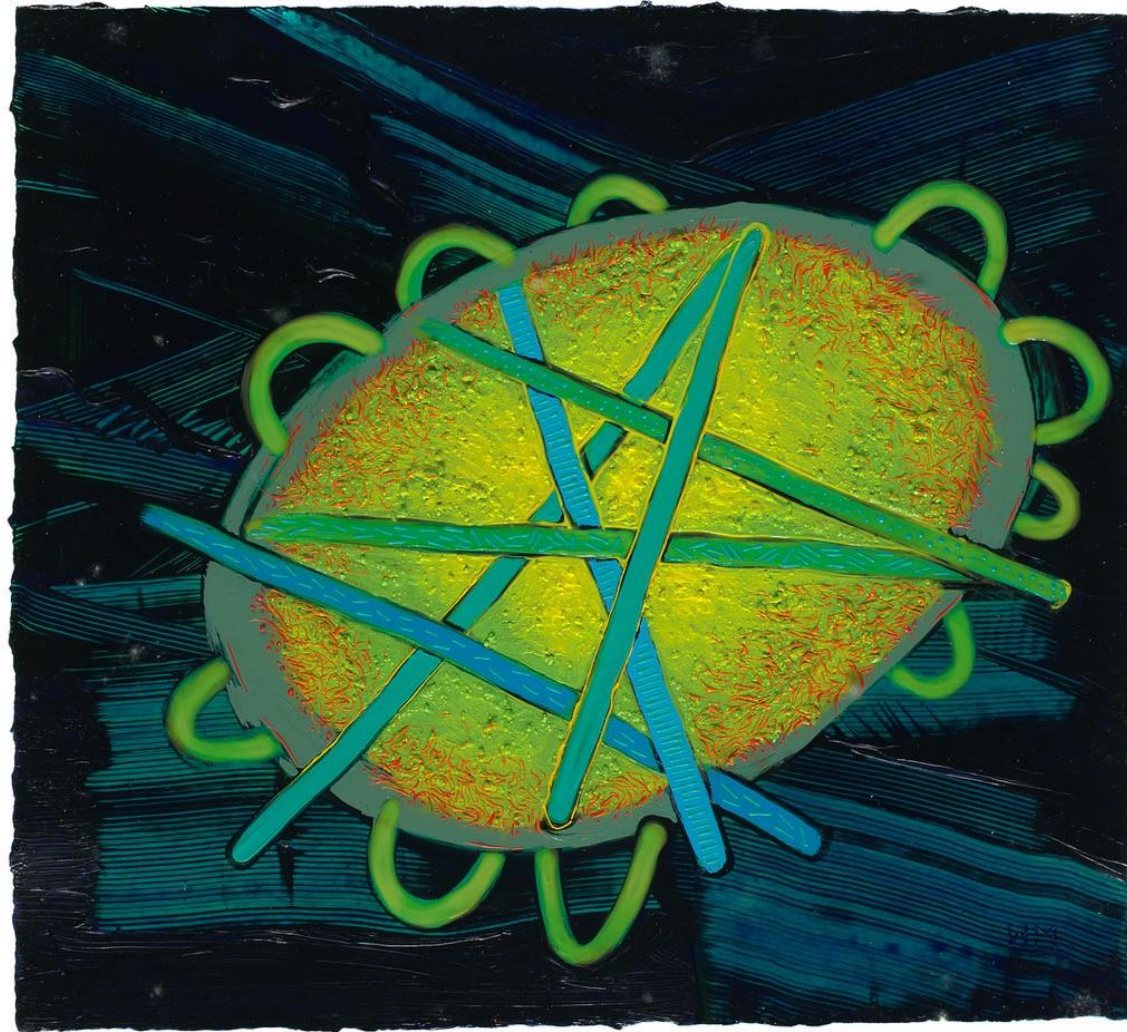
Lori Lawrence  
Oak Branch

Mixed media on paper, 23" x 29" (Framed); Opening Bid \$150/ Retail: \$300



Willie Marlowe  
Column with Levitation

Acrylic on paper, 12.75" x 12.75" (Framed); Opening Bid \$150/ Retail: \$500



Willie Marlowe  
Fathom Marker

Acrylic on paper, 13.75" x 14.5" (Framed); Opening Bid \$150/ Retail: \$600



Chuck Miller  
The Long, Strange Trip  
Photographs combined in lenticular print, 14" x 11";  
Opening Bid \$150/ Retail: \$225



Thomas E. Nelson

Porcupine Islands, Bar Harbor, ME 10.8.21

Oil sketch on cardboard, 17" x 4.25"; Opening Bid \$300/ Retail: \$600

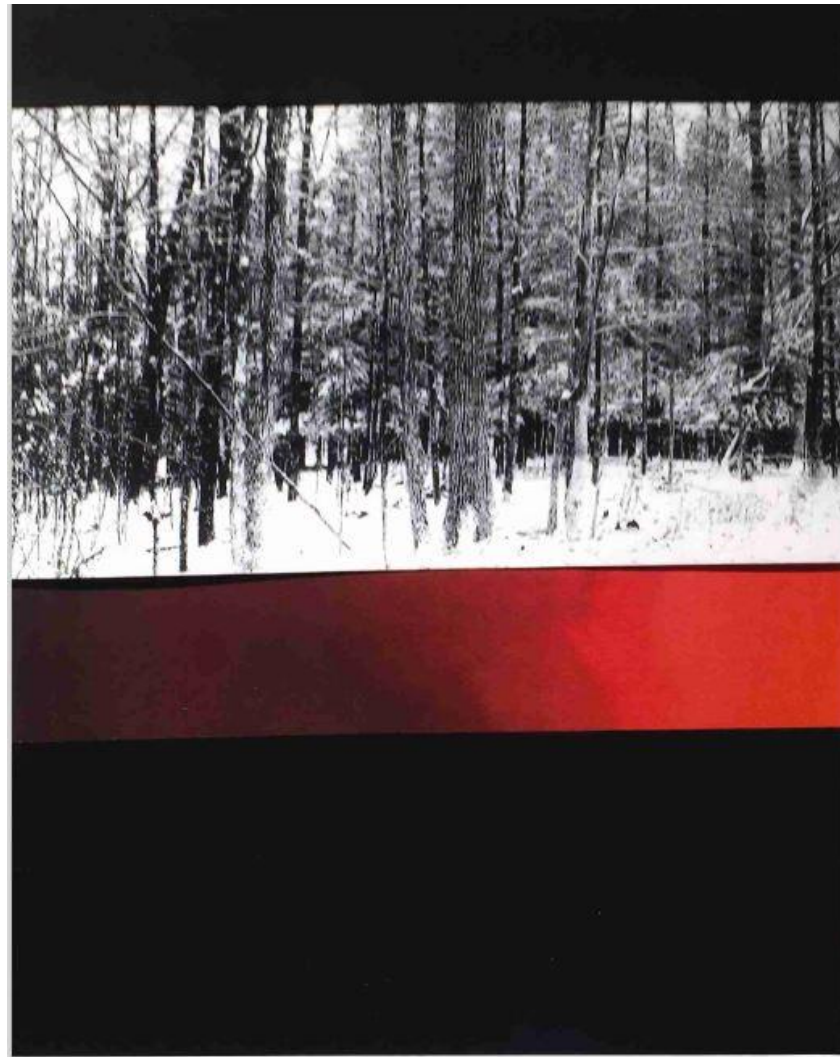


Thomas E. Nelson

Eagle Lake 10.7.21

Oil sketch on cardboard, 17" x 4.25"; Opening Bid \$300/ Retail: \$600





Thom O'Connor  
Winter trees

Polymer gravure/ collage, 20" x 22.5" (Framed); Opening Bid \$350/ Retail: \$500



Rita Papandrea

Swirl

Powder coated steel, 10-inch diameter;

Opening Bid \$150/ Retail: \$250



William O. Pettit, III

The Water Tower

Oil on canvas, 65" x 41" (Framed); Opening Bid \$500/ Retail: \$2,500



William O. Pettit, III

The Leaning Trees

Oil on canvas, 15.5" x 13.5"; Opening Bid \$150/ Retail: \$450



Elisa Pritzker  
Magic Leaf

Found dried coccoloba uvifera leaf, acrylic paint, 7.5" x 7.5";  
Opening Bid \$200/ Retail: \$300



Elisa Pritzker

Magic Leaf

Found dried coccoloba uvifera leaf, acrylic paint, 10" x 10";

Opening Bid \$280/ Retail: \$400



Linda Psomas

Cooling Station: Engine Company 6

Oil on Canvas, 18" x 22" (Framed); Opening Bid \$800/ Retail: \$1,600



Thomas Sarrantonio  
Field Study July 12, 2021  
Oil on wood panel, 10" x 10"; Opening Bid \$200/ Retail: \$750





Thomas Sarrantonio  
Field Study June 9, 2021  
Oil on wood panel, 10" x 10"; Opening Bid \$200/ Retail: \$750



Amy Silberkleit

Late June

Color lithograph, 14" x 16" (Framed); Opening Bid \$150/ Retail: \$175



Amy Silberkleit

Low Light

Lithograph, 14" x 16" (Framed); Opening Bid \$150/ Retail: \$175



Susan Stuart  
A Wrap Around

Gouache on paper 10" x 10" (Framed), Opening Bid \$400/ Retail: \$500



Susan Stuart  
2<sup>nd</sup> Time Walk Through  
Gouache on paper 10" x 10" (Framed), Opening Bid \$400/ Retail: \$500



Barbara Todd  
Moon and Cloud – 19 (from a series “A Month of Moons”)  
Collage and sandblasted glass, 17” x 17” (Framed);  
Opening Bid \$150/ Retail: \$900



Barbara Todd

Moon and Cloud – 22 (from a series “A Month of Moons”)

Collage and sandblasted glass, 17” x 17” (Framed)

; Opening Bid \$150/ Retail: \$900



Catherine Wagner Minnery  
Backyard Woods (Winter) #1  
Oil on canvas, 8" x 8"; Opening Bid \$195/ Retail: \$295

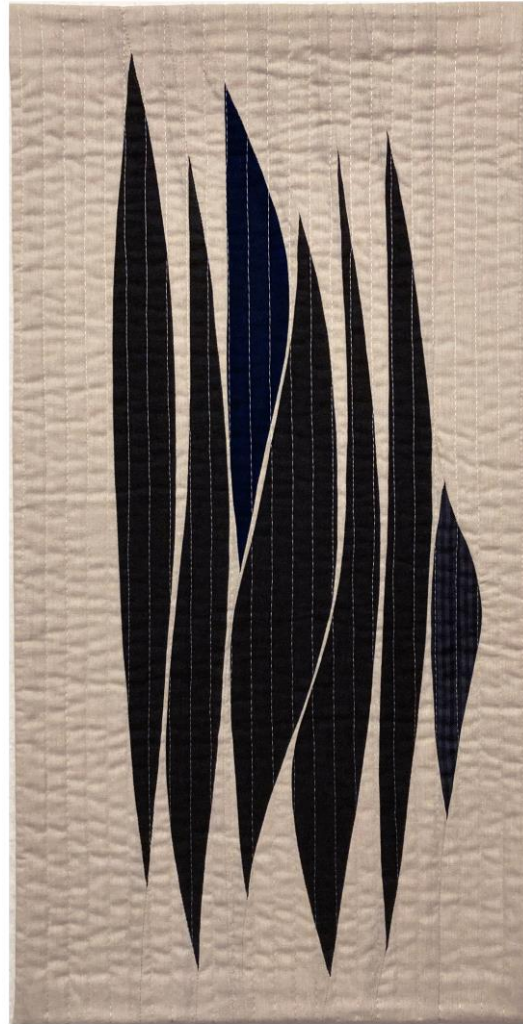




Catherine Wagner Minnery  
Backyard Woods (Winter) #2  
Oil on canvas, 8" x 8"; Opening Bid \$195/ Retail: \$295



Mary Pat Wager  
Copper Line I 3" x 43.75" x 2.5"  
Plasma cut steel, copper, Opening Bid \$450/ Retail: \$600



Victoria van der Laan  
Deep Calm

Cotton fabric: pieced and quilted, 11" x 21.5" ; Opening Bid \$150/ Retail: \$300



Dale Wolfield  
Cicada Sun Bowl

Stoneware with pigmented engobe sgraffito and relief carving, 11" x 14";  
Opening Bid \$150/ Retail: \$480



Dale Wolfield

Glyphic Jade and Leaves Platter

Porcelain with pigmented engobe sgraffito and relief carving, 10" x 3.5"; Opening  
Bid \$150/ Retail: \$430



Mark Zielinski  
Burden Iron Works Ladle Car  
Acrylic on panel, 14" x 18" (Framed); Opening Bid \$175/ Retail: \$350



Anne Diggory  
Study Rock Flow

Watercolor, 19" x 14.5" (Framed); Opening Bid \$300/ Retail: \$700